

AG News Today

AGRICULTURE & NATURAL RESOURCES



Kentucky Ag Disaster Donations

The Kentucky Department of Agriculture and the University of Kentucky College of Agriculture, Food and Environment's Cooperative Extension Service are teaming up to coordinate an operation to identify the needs and supplies for individual farming operations in the impacted area.

Individuals in impacted areas should contact their county extension office [r2o.rs6.net], which will collect a list of needs from producers for their operation and provide that information to the KDA. The Department will then coordinate with farm organizations in the commonwealth and work to match the requested need with the donor of the item. This can include immediate needs such as hay or feed to longer-term items such as fencing material.

Contact the Hopkins County Extension Service to report any Agricultural related damage. We will compile a list of Ag related items that you are in need of and work to direct those resources your way. You can reach our office through December 23rd by calling (270)821-3650. Our office will be closed from December 24th through January 3rd, but

you can contact me directly via email at jstone@uky.edu, or you can call or text my cell phone at (270)839-2134. Messages may also be sent to me through

Facebook messenger to Jay Stone-Extension,

Hopkins County Agricultural Extension, Tri-County Grain Improvement, or the Hopkins County Livestock Association.



University of Kentucky
College of Agriculture,
Food and Environment
Cooperative Extension Service

HOPKINS COUNTY
COOPERATIVE
EXTENSION SERVICES

75 CORNWALL DRIVE
MADISONVILLE, KY 42431-8780
(270)821-3650
WWW.CA.UKY.EDU/CES

What's in this issue:

Kentucky Ag Disaster Donations

Teaming Up to Support Western Kentucky - Two Ways to Support Farmers Affected by Disaster

Timely Tips for Calving Herds

2021 Fall Crop Protection Webinar Series

Upcoming Events

Tri-County Grain Day

Roots to Riches



Following us online is an easy way to keep up with [Hopkins County Agriculture Extension](#)

JAY STONE
*County Extension Agent
for Agriculture and
Natural Resources*

(270)821-3650 Office
(270)839-2134 Cell
jstone@uky.edu



Kentucky Department of Agriculture, Kentucky Farm Bureau Federation, University of Kentucky Cooperative Extension team up to support Western Kentucky

Two ways to support farmers, ag-businesses in Western Kentucky



FRANKFORT (Dec. 13, 2021) – The Kentucky Department of Agriculture (KDA), the Kentucky Farm Bureau Federation, and the University of Kentucky College of Agriculture, Food and Environment Cooperative Extension are joining forces to raise funds and resources for agricultural-related recovery efforts for farmers affected by the weekend’s devastating storm event.

“West and western Kentucky agriculture did not escape the historic and devastating tornadoes that struck the region this weekend,” Kentucky Commissioner of Agriculture Ryan Quarles said. “We’ve seen lives lost, grain bins leveled, and livestock and poultry barns demolished. Our farmers need funds and resources to maintain operations and rebuild. I thank Kentucky Farm Bureau and the University of Kentucky Cooperative Extension for stepping up to help Kentuckians in need.”

“The heartbreaking devastation from this past weekend’s tornado outbreak is overwhelming for so many families and communities throughout the commonwealth. Never have so many Kentuckians experienced such monumental loss. Many lost everything,” said Kentucky Farm Bureau President Mark Haney. “Rural communities affected by these devastating storms need our help. I am confident this fund will be successful helping Kentucky farm families get back to the important business of producing the food, fiber, and fuel upon which our nation relies.”

“UK Cooperative Extension has always been both in and of the counties it serves. Our agents and staff are leaders and neighbors in their communities and stand ready to serve the West Kentucky region as we have historically done in the wake of tragedy,” said Nancy Cox, Vice President for Land-grant Engagement and Dean of the UK College of Agriculture, Food and Environment. “We appreciate the leadership of Kentucky Farm Bureau, the Kentucky Department of Agriculture and our agents on the ground – together we will continue serving Kentucky.”

The Kentucky Agriculture Relief Fund

The Kentucky Agriculture Relief Fund is a cash donation portal managed by the Kentucky Farm Bureau Education Foundation. Funds collected will be administered through a grant process. The donations will be used to support farmers and agribusinesses in the affected areas.

Donations can be made to the Kentucky Agriculture Relief Fund can at gofundme.com/KyAgReliefFund.

Kentucky Ag Disaster Donations

The Kentucky Department of Agriculture and the University of Kentucky College of Agriculture, Food and Environment’s Cooperative Extension Service are teaming up to coordinate an operation to identify the needs and supplies for individual farming operations in the impacted area.

Individuals in impacted areas should contact their county extension office, which will collect a list of needs from producers for their operation and provide that information to the KDA. The Department will then coordinate with farm organizations in the commonwealth and work to match the requested need with the donor of the item. This can include immediate needs such as hay or feed to longer-term items such as fencing material.

Timely Tips

by Dr. Les Anderson, Beef Extension Professor, University of Kentucky

Spring Calving Herd

- Be sure that weaned heifer calves are on a feeding program that will enable them be at about 65% of their mature weight before the start of the breeding season. Rations should be balanced to achieve gains sufficient to get heifers from their current weight to that “target” weight.
- Body condition is important, plan an adequate winter program for cows to be at least body condition score 5 (carrying enough flesh to cover the ribs) before the calving and breeding season. This will help them to breed early in the spring. Thin cows should be fed to regain body condition prior to winter. Don’t let cows lose weight/condition. Supplementation will most likely be needed. Find low-cost supplemental feeds to meet the nutrient needs of cattle.
- Divide the herd into groups for winter feeding -
 - weaned heifer calves
 - first-calf heifers, second-calvers and thin mature cows
 - the remainder of the dry cows which are in good body condition
 - herd sires
- Begin feeding the lowest quality forage to dry cows which are in good condition during early winter and save the best hay for calving time or for weaned calves.
- Order and number ear tags for next year’s calf crop this winter. It is also a good time to catch up on freeze branding and replacing lost ear tags.

Fall Calving Herd

- Get breeding supplies together, if using estrous synchronization and/or A.I.
- Have Breeding Soundness Evaluation (BSE) performed on bulls (even if you used them this spring).
- The fall breeding season starts. Breeding can best be accomplished on stockpiled fescue pasture; otherwise, cows with calves should be fed 25-30 pounds of good quality hay or its equivalent. Supplement with grain, if needed, and minimize hay waste. **DON’T ALLOW THESE COWS TO LOSE BODY CONDITION PRIOR TO OR DURING THE BREEDING SEASON.** It is easy to wait too long to start winter feeding. Don’t do it unless you have stockpiled fescue.
- Nutrition level of cows during the first 30 days after conception is critical. Pay attention.
- Observe performance of bulls during breeding season. Watch cows for return to estrus, if you see several in heat, try to determine the cause and consider changing bulls.

General

- Complete soil testing pasture to check for fertility and pH.
- Consider putting down geotextile fabric and covering with gravel in feeding areas before you begin hay feeding to minimize waste of expensive hay. Or, perhaps, construct concrete feeding pads for winter feeding areas.
- Monitor body condition and increase feed, if needed, for all classes of cattle.

Announcing the University of Kentucky 2021 Fall Crop Protection Webinar Series

The University of Kentucky has organized five webinars on field crop protection topics that will be hosted through the Southern Integrated Pest Management Center starting on November 11. These weekly webinars will cover topics such as new research on foliar corn disease management, soybean disease identification and management, updates on fall armyworm, guidelines for choosing herbicide options and herbicide-tolerant crop traits, and recommendations for control of weeds like Palmer amaranth, waterhemp, marehail (horseweed), annual ryegrass, and Johnsongrass. Kentucky pesticide applicator credits and Certified Crop Advisor continuing education credits have been applied for. **Pre-registration for the meetings is required through the registration URL provided.** Dates, speakers and presentation registration links are listed below:

All webinars will start at 9:00 AM Central/10:00 AM Eastern

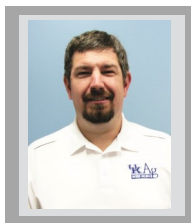


Date: November 11, 2021

Speaker: *Dr. Carl Bradley*

Title: Spots, Rots, and Syndromes: Managing Challenging Soybean Diseases

Registration URL: https://zoom.us/webinar/register/WN_9fde3p9mSe-SSUdatGHjHQ

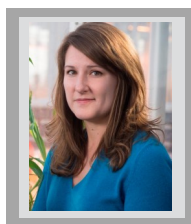


Date: November 18, 2021

Speaker: *Dr. Travis Legleiter*

Title: Re-setting the Defense for Control of Problematic Weeds

Registration URL: https://zoom.us/webinar/register/WN_NcCn1dgjQoC8fbvXHDMggw



Date: December 2, 2021

Speaker: *Dr. Kiersten Wise*

Title: What We Learned About Corn Fungicide Applications in 2021

Registration URL: https://zoom.us/webinar/register/WN_zd9vPB1mQEiG_VW83piXug

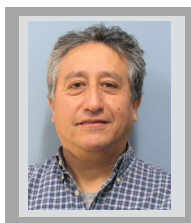


Date: December 9, 2021

Speaker: *Dr. JD Green*

Title: A Resurgence of Other Weeds from the Past

Registration URL: https://zoom.us/webinar/register/WN_oeljDIYARfe5m26zWJmRNq



Date: December 16, 2021

Speaker: *Dr. Raul Villanueva*

Title: Studies on the management of bean leaf beetle, three cornered alfalfa hoppers and the fall armyworm outbreak in soybeans

Registration URL: https://zoom.us/webinar/register/WN_Aqq56bqkSX-bix-uZLT3Pg

Upcoming Events

January 3-4

Kentucky Fruit and Vegetable Conference at Sloan Convention Center in Bowling Green

January 4

Winter Wheat Meeting

January 13

Kentucky Commodity Conference

January 20

Area Grain Meeting at the Ballard Convention Center in Madisonville, KY

January 31

Area Tobacco Meeting at the Webster County Extension Office in Dixon, KY

**BQA Training Date
To be determined.**

February 3

Roots to Riches Seminar at the Ballard Convention Center in Madisonville, KY

February 22

Area Poultry Conference at Myers Creek Park in Calhoun, KY

March 9

IPM Training School

May 10

Wheat Field Day

June 30

Pest Management Field Day

July 21 or 26

Corn, Soybean, & Tobacco Field Day

July 28 (tentative)

High School Crop Scouting Competition

TRI-COUNTY GRAIN DAY

Thursday, January 20th

8:00 a.m. - 2:30 p.m.

Speakers will be Dr. Travis Legleiter, Dr. John Groves, Dr. Jordan Shockley, and Dr. Kiersten Wise.

Topics will include Weed Control Issues, Plant Diseases, and Fertilizer Strategies.



Dicamba Certifications by
Phil Rowland

Ballard Convention Center

605 E Arch St,
Madisonville, KY 42431



Lunch will be provided. Must
RSVP by Monday, January 17th.

For more information or to RSVP,
call the Hopkins County Cooperative
Service at 270-821-3650.



KY INNOVATION

ROOTS TO RICHES



University of Kentucky
College of Agriculture,
Food and Environment
Cooperative Extension Service



AGRICULTURAL CONFERENCE

**THURSDAY, FEBRUARY 3RD
AT THE BALLARD CONVENTION CENTER
MADISONVILLE, KY 42431**

**Register at
<http://tinyurl.com/3e6pnev9>**

TOPICS

CHANGES IN FFA

RATIZZO DRONE TECHNOLOGY FOR AGRICULTURE

SHARED USE EQUIPMENT PROGRAM IN HOPKINS COUNTY

ETHANOL PRODUCTION WITH OUR CURRENT OIL PRICES

DECENTRALIZATION OF BEEF PROCESSING

FERTILIZER PRICES AND DEMANDS

For More Information Contact : Ruthann Padgett (270)821-1939 rpadgett@westcenteralky.com

KEEP ON THE LOOKOUT FOR THE NEW BQA TRAINING DATE



2022 WINTER WHEAT MEETING

January 4th from 9:00-3:00 CST

The Bruce Convention Center, Hopkinsville, KY

Pre-Registration required by Dec 21st to guarantee lunch

(Required by The Bruce due to supply chain uncertainty)

<https://ukwinterwheatmeeting.eventbrite.com>

TOPICS INCLUDE:

- FIVE WAYS TO COMMUNICATE OUR ROLE IN SUSTAINABILITY
Karen Meinders, Corteva Agriscience
- WHEAT CROP CONDITION
- WHAT WE LEARN FROM THE WHEAT YIELD CONTEST
- INSECT UPDATE 2021
- BLIGHTS AND BLOTCHES: WHEAT DISEASE MANAGEMENT UPDATE
- HOW TO SOIL SAMPLE FOR PRECISION AG AND THEN MANAGE WHAT YOU FIND
- ANNUAL RYE GRASS CONTROL IN WHEAT
- ECONOMICS OF THE 2022 WHEAT CROP
- THE LATEST ON N, S AND MICRONUTRIENT INTERACTIONS IN WHEAT NUTRITION
- Q&A PANEL

CCA and Pesticide Credits pending

For information: CLaurent@uky.edu or 270-365-7541 ext 21321



Educational programs of Kentucky Cooperative Extension serve all people regardless of economic or social status and will not discriminate on the basis of race color, ethnic origin, national origin, creed, religion, political belief, sex, sexual orientation, gender identity, gender expression, pregnancy, marital status, genetic information, age veteran status, or physical or mental disability, University of Kentucky, Kentucky State University, U.S. Department of Agriculture and Kentucky Counties, Cooperating. Lexington, KY 40546