

Hopkins County Extension

Family and Consumer Sciences

HOPKINS COUNTY
 COOPERATIVE
 EXTENSION SERVICES
 75 CORNWALL DRIVE
 MADISONVILLE, KY 42431-8780
 (270)821-3650
 WWW.CA.UKY.EDU/CES



AUTUMN HEALTH CONCERNS

There are many things to love about autumn: The air begins to cool down a bit, leaves change colors, and there are many special foods and fragrances that we associate with this time of year. However, autumn can also bring specific health concerns for some people. You can address your health concerns and still enjoy the season and all it has to offer.

Dry Skin - As the air cools, some people have more dry skin. To prevent cracking and itching, try to stay hydrated by drinking plenty of water, continuing to wear sunscreen when outdoors, and use a lotion or cream skin barrier to help moisturize skin when you get out of the bath or shower.

Decreased Immune Function - You may find yourself getting sick more as the seasons change. Stay up to date on all vaccines, wash your hands, and check with your doctor if allergy or cold symptoms become persistent.

Sleep Disturbances - Even though the days are becoming shorter, you may find that you are getting less sleep at night. This can happen as the season change affects circadian rhythms. Try to establish a consistent bedtime routine, plan to get at least seven to eight hours of sleep per night, and avoid screens once you turn off the lights.

Take advantage of the change in seasons to catch up on needed annual health exams as well. If you have not done so, schedule an annual physical, dental cleaning, and vision check. These strategies combined can help you have an enjoyable autumn and end the year well.

Reference: <https://www.cdc.gov/chronicdisease/resources/infographic/healthy-fall.htm>

Source: Katherine Jury, Extension Specialist for Family Health



Following us online is an easy way to keep up with [Hopkins County Extension Family and Consumer Science](#)

Upcoming Classes

Homemaker Happenings

Piecemakers
 10/14/2023
 10/24/2023

Happy Homemakers
 10/18/2023 1:00-3:00

Needles and Yarn
 10/11/2023 12:00-2:00

Homemaker Leader Lessons:

*Healthy Eating Around the World-
 November 1st at 10:00 at the Hopkins
 County Extension Office*

AMANDA DAME
 County Extension Agent for
 Family and Consumer Sciences





Soup & PANINIS

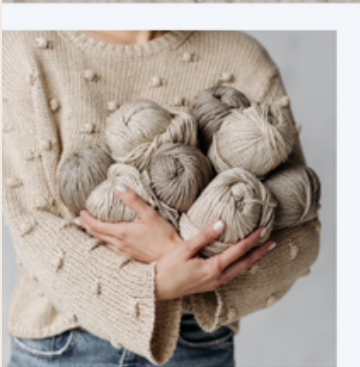
LEARN HOW TO ELEVATE YOUR SEASONAL SOUP EXPERIENCE AND PAIR IT WITH A DELECTABLE, FRESHLY PRESSED PANINI ON THE SIDE

TUESDAY,
DECEMBER 5TH
11:00A.M. & 5:30P.M.

CALL THE HOPKINS CO. EXTENSION OFFICE TO SIGN UP AT 270-821-3650



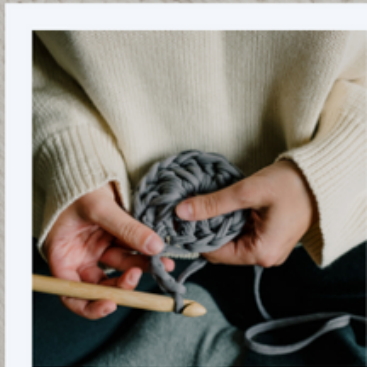
Crochet Club



BEGINNERS



REFRESHER

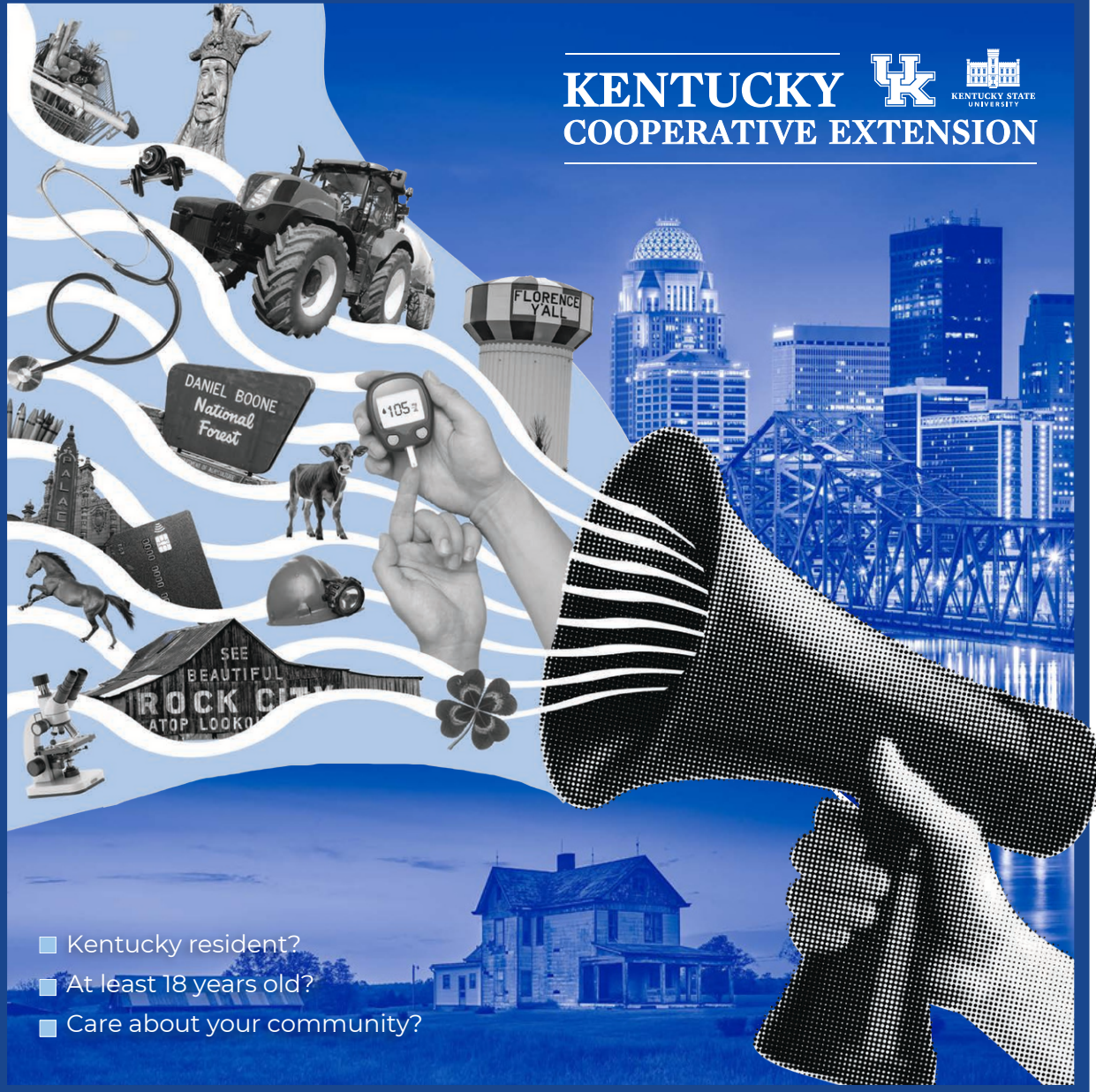


ADVANCED

BRING YOUR YARNS & J-HOOKS AND JOIN US FOR SOME CROCHET FUN HERE AT THE HOPKINS CO. EXTENSION OFFICE ON THE 1ST & 3RD TUESDAY OF THE MONTH AT 5:30P.M.

SIGN UP BY CALLING 270-821-3650

KENTUCKY
COOPERATIVE EXTENSION



- Kentucky resident?
- At least 18 years old?
- Care about your community?



HOW CAN WE serve you??

Take our ten-minute survey to help us develop programs addressing needs in your community. Scan the code above or visit:

go.uky.edu/serveKY

Cooperative Extension Service

Agriculture and Natural Resources
 Family and Consumer Sciences
 4-H Youth Development
 Community and Economic Development

MARTIN-GATTON COLLEGE OF AGRICULTURE, FOOD AND ENVIRONMENT

Educational programs of Kentucky Cooperative Extension serve all people regardless of economic or social status and will not discriminate on the basis of race, color, ethnic origin, national origin, creed, religion, political belief, sex, sexual orientation, gender identity, gender expression, pregnancy, marital status, genetic information, age, veteran status, physical or mental disability or reprisal or retaliation for prior civil rights activity. Reasonable accommodation of disability may be available with prior notice. Program information may be made available in languages other than English.
 University of Kentucky, Kentucky State University, U.S. Department of Agriculture, and Kentucky Counties, Cooperating.
 Lexington, KY 40506



Disabilities accommodated with prior notification.

Contact your local Extension Office for a paper copy of the survey.

For ages 5 and under accompanied by an adult

LAUGH & LEARN



Fun & Creative Playdate for Pre-Schoolers

Games, Story Times, Sensory
& Developmental Activities



JOIN US

**Thursday,
October 12th at 11:00 a.m.
to learn about pumpkins!**

Sign up by calling 270-821-3650
or scanning the QR code

Mahr Park
Shelter at the Playground Area
465 Mahr Park Drive
Madisonville, KY 42431



Cooperative Extension Service
Agriculture and Natural Resources
Family and Consumer Sciences
4-H Youth Development
Community and Economic Development

Educational programs of Kentucky Cooperative Extension serve all people regardless of economic or social status and will not discriminate on the basis of race, color, ethnic origin, national origin, creed, religion, political belief, sex, sexual orientation, gender identity, gender expression, pregnancy, marital status, genetic information, age, veteran status, physical or mental disability or receipt of public benefits or prior criminal activity. Reasonable accommodations of disability may be available with prior notice. Program information may be made available in languages other than English. University of Kentucky, Kentucky State University, U.S. Department of Agriculture, and Kentucky Cooperative Extension, KY 40306



UK Martin-Gatton
College of Agriculture,
Food and Environment
University of Kentucky



CHRISTMAS ORNAMENTS

MONDAY, NOVEMBER 27TH
5:30P.M.



\$7



\$7



\$5

PERSONALIZED



\$7



\$7

CALL 270-821-3650 TO REGISTER
MUST PAY BY NOVEMBER 20TH
HOPKINS CO. EXTENSION OFFICE
75 CORNWALL DRIVE, MADISONVILLE, KY

MONEYWISE

VALUING PEOPLE. VALUING MONEY.

OCTOBER 2023

Nichole Huff, Ph.D., CFLE | Assistant Extension Professor Family Finance and Resource Management | nichole.huff@uky.edu

TIME WELL SPENT: ORGANIZING TIPS FOR INCREASED PRODUCTIVITY

Productivity allows you to make progress on and complete necessary tasks. However, many people are not as productive as they would like to be. To be productive you must be intentional with your time and space. This can be hard to do if your spaces are cluttered or disorganized, or if you lack routines at home or work.

THE POWER OF CLUTTER

Clutter can distract from completing tasks. Whether at work or doing household chores, having organized spaces can reduce stress and improve your overall well-being. You can apply many organizational strategies to at-home and on-the-job workspaces. You can organize a home or an office over time. Start small with one drawer, closet, cabinet, or bookshelf. Then work your way through your home, garage, or office — one space at a time.

- 1. Clear the clutter.** Begin by removing visible trash or other items that need to be discarded. Broken? Toss it. No longer needed? Consider donating it to an individual or organization who could put it to use.
- 2. Group like-items.** Next, sort items by purpose. Group like-items together and find a way to contain them. Use simple storage solutions (like bins, baskets, or baggies) that you already have on hand.



- 3. Give everything a "home."** After grouping your items, be intentional about how you store them. Everything should have a "home" in your home or office. When everything has a designated space, it keeps clutter at bay. When storing an item, consider how frequently you use it and how easy it is to access.

THE POWER OF PERSONAL ROUTINES

Three powerful personal routines to establish are sleep, meal, and exercise routines. Develop a *sleep routine* by setting consistent sleep and wake times, even on the weekends. Create a set of tasks that you do before bed to signal to your body that it is time to sleep. This might include putting your phone away for the night, taking a shower, or reading a book.



REGARDLESS OF HOW YOU CHOOSE TO ORGANIZE YOUR TIME AND SPACE, REMEMBER THAT IT MUST WORK FOR YOU.



Planning and shopping for your weekly meals in advance helps establish *meal routines*. This can minimize the daily stress of, “What’s for dinner?” It can also help you plan for affordable, healthy meals. Finally, *exercise routines* (such as an evening walk) can ensure you get the recommended 150 to 300 minutes of exercise per week for general wellness, according to the U.S. Department of Health and Human Services.

THE POWER OF PROFESSIONAL ROUTINES

As you consider “professional” routines, note that these routines might apply to more than just paid employment. For example, you may volunteer, provide care for loved ones, or enjoy hobbies for which organizing your time might increase your productivity. Consider the 4 P’s:

- **Prep.** Develop the routine of prepping for the next “work” day before you go to bed. This might include packing your bag and/or lunch, laying out clothes, or making a to-do list.
- **Production.** Create “production” routines. For example, group like-tasks together throughout your workday or gather all necessary supplies before starting a task.
- **Pause.** Take small, intentional breaks to help you recharge throughout the day.

- **Play.** Set aside time each week to focus on taking care of yourself and having fun with friends, family, or co-workers outside of work.

Regardless of how you choose to organize your time and space, remember that it must work for you. Take time to explore what works — and what doesn’t — and adjust your organizational systems or routines as needed. Additionally, look for ways to incorporate organization into your routines. For example, part of your “sleep” routine might include tidying up before bed.

TIME WELL SPENT CURRICULUM

Interested in learning more? Contact your county Cooperative Extension office. Ask your FCS agent about the free four-lesson curriculum, *Time Well Spent: Productivity Skills for Success*, developed by Kentucky FCS Extension. Topics include productivity versus procrastination, organizing your time and workspace, prioritizing tasks, and work-life balance.

REFERENCES:

Huff, N., Bejda, M., May, K., & McCulley, M. (2022). *Organizing Your Time and Workspace*. University of Kentucky Family and Consumer Sciences Extension Service. #FRM-TWS.002.

Written by: Nichole Huff and Miranda Bejda | Edited by: Alyssa Simms | Designed by: Kelli Thompson | Images by: 123RF.com

Nichole Huff, Ph.D., CFLE | Assistant Extension Professor Family Finance and Resource Management | nichole.huff@uky.edu



Become a fan of **MONEYWISE** on Facebook! [Facebook.com/MoneyWise](https://www.facebook.com/MoneyWise)

ADULT

HEALTH BULLETIN

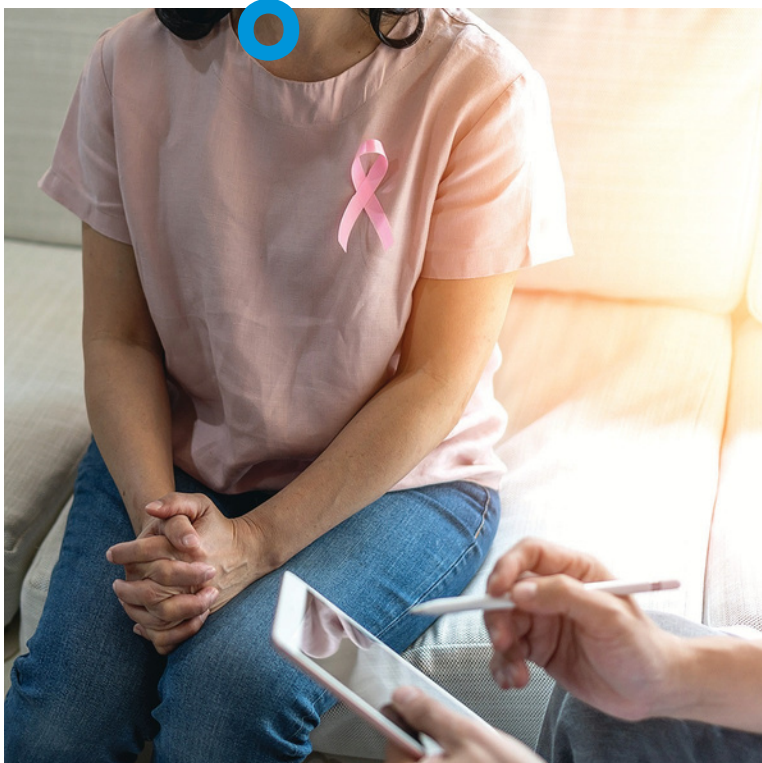


OCTOBER 2023

Download this and past issues of the Adult, Youth, Parent, and Family Caregiver Health Bulletins: <http://fcs-hes.ca.uky.edu/content/health-bulletins>

THIS MONTH'S TOPIC:

BREAST CANCER AWARENESS



October is Breast Cancer Awareness

Month, a time dedicated to increasing public awareness about the signs and symptoms of breast cancer. The month brings awareness to screening, treatment, and research resources as well.

Every year in the United States, about 264,000 women get breast cancer and tragically, 42,000 women die from the disease annually. Early detection and treatment are the best ways to ensure that a person diagnosed with breast cancer is able to beat the disease.

Most breast cancers are found in women who are 50 years old or older, but breast cancer also affects younger women. Other than skin cancer, breast cancer is the most common cancer among American women. Mammograms are the best way to find

Continued on the next page →



Cooperative Extension Service

Agriculture and Natural Resources
Family and Consumer Sciences
4-H Youth Development
Community and Economic Development

MARTIN-GATTON COLLEGE OF AGRICULTURE, FOOD AND ENVIRONMENT

Educational programs of Kentucky Cooperative Extension serve all people regardless of economic or social status and will not discriminate on the basis of race, color, ethnic origin, national origin, creed, religion, political belief, sex, sexual orientation, gender identity, gender expression, pregnancy, marital status, genetic information, age, veteran status, physical or mental disability or reprisal or retaliation for prior civil rights activity. Reasonable accommodation of disability may be available with prior notice. Program information may be made available in languages other than English. University of Kentucky, Kentucky State University, U.S. Department of Agriculture, and Kentucky Counties, Cooperating. Lexington, KY 40506



Disabilities accommodated with prior notification.

Mammograms are the best way to find breast cancer early. That's when it is easier to treat and before it is big enough to feel or cause symptoms.



→ Continued from the previous page

breast cancer early. That's when it is easier to treat and before it is big enough to feel or cause symptoms. Ask your doctor when you should get a mammogram to check for signs of breast cancer.

Men also get breast cancer, but it is not as common. About 1 out of every 100 breast cancers diagnosed in the United States is found in a man.

Symptoms

It is important for everyone to be aware of signs and symptoms of breast cancer. Though in early stages, some people have no symptoms at all. Symptoms can include:

- Change in the size or the shape of the breast
- Pain in any area of the breast tissue
- Nipple discharge other than breast milk (including blood)
- A new lump in the breast tissue or underarm

If you have any signs that worry you, see your doctor right away.

Prevention

There are also things that you can do to lower your risks of developing breast cancer. Some of those things include:

- Keep a healthy weight and exercise regularly.
- Do not drink alcohol, or drink alcohol in moderation.
- Breastfeed your children, if possible.
- If you are taking hormone replacement therapy or birth control pills, ask your doctor about the risks.

REFERENCE:

<https://www.cdc.gov/cancer/dcpc/resources/features/breastcancerawareness>

**ADULT
HEALTH BULLETIN**

Written by: Katherine Jury, MS
Edited by: Alyssa Simms
Designed by: Rusty Manseau
Stock images: 123RF.com, Adobe Stock

